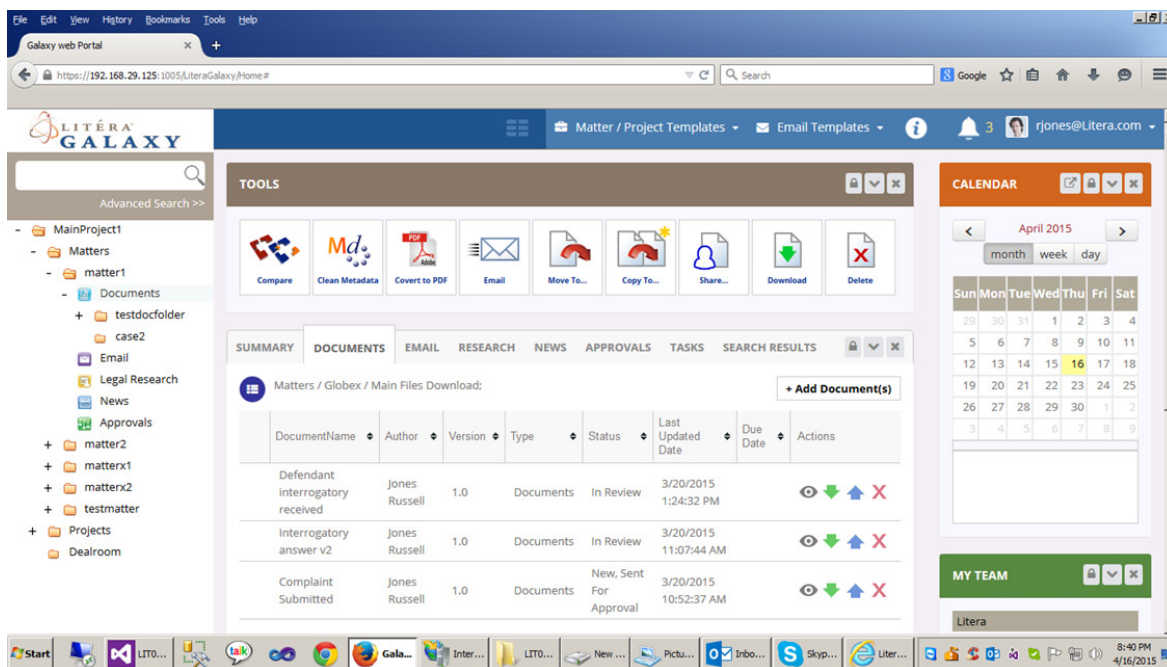




# Simplify Secure Matter Collaboration and Retain Content Custody



*“Galaxy has the potential to transform the way many in-house legal teams manage their relationships with outside counsel.”*

Charles Christian  
American Legal Technology Insider



- Secure unified matter management and collaboration software platform engineered with cyber security in mind
- A highly productive collaboration environment with patent-pending data leakage prevention technology for content security
- Configurable work flow and approvals

## QUICK FACTS

- Optional dual-factor authentication resolves security and identity management by mitigating cyber threats and data theft.
- Bi-directional synchronization between changes made in Litéra Galaxy® and those made directly within back-end systems.
- Leverage back-end systems (DMS, CRM, ERP, HRIS, case management, eDiscovery and others) to fully enable teams working across firewalls.



## SYSTEM REQUIREMENTS

### *Client*

- .NET Framework 4.5
- 50 GB disk space free
- Internet Explorer

### *Server System Requirements*

- .NET Framework 4.0
- Windows Server 2008 R2 or above

## INTEGRATION

- IBM FileNet
- iManage® Work
- OpenText eDOCS and DM
- Microsoft® SharePoint
- WORLDOX®
- CRM systems
- ERP and accounting systems

*Protected by one or more of the following US Patents licensed from Litéra Technologies LLC: 8,381,104, 7,818,678, 7,895,276, 8,060,575, 7,818,660, 8,136,031, 8,471,781, 8,381,092, 9,105,007, and 8,527,864.*

*Litéra®, Content Confidence® and Litéra Galaxy® are registered trademarks of Litéra Corp. All other brand names, product names, or trademarks belong to their respective holders.*

## FEATURES AND BENEFITS

- Built-in workflow engine allows easy configuration of specific business processes
- Create matter and project team spaces that are accessible across all firewalls where existing case management system information can be exposed
- Uniformly displays content, projects, and legal matters
- Comprehensive calendaring functions including bi-directional synchronization to Microsoft® Outlook
- Ensures security with optional dual-factor security authentication
- Easily route work with robust workflow and document approval processes
- Integrated task tracking ensures projects are meeting deadlines and gives a dashboard view across the portfolio
- Retain full control of all related data, content and approvals.
- Set restrictions disabling document transference in any way
- Collaborative functions include:
  - co-authoring
  - task tracking
  - calendaring
  - instant messaging
  - content comparison
  - PDF conversion
  - digital signatures

## ABOUT LITÉRA®

Litéra offers a comprehensive content risk management suite of cyber-secure document creation, collaboration, and control technology that provides organizations with unsurpassed Content Confidence®. Litéra's patented solutions increase productivity throughout the document lifecycle, and enable more secure and effective collaboration between people, teams and organizations to empower ideas that drive success. Litéra solutions offer information workers and mobile professionals the ability to manage their documents and data with a degree of control not available through any other applications on the market.



US +1 336.375.2991 EU +44 7860 646979 sales@litera.com www.litera.com

UNITED STATES ■ UNITED KINGDOM ■ UKRAINE ■ PHILIPPINES ■ INDIA ■ SINGAPORE